

The Boxing Academy offers an education pathway for students between the ages of fourteen and sixteen who need an alternative to mainstream. Originally based in Tottenham, we were registered as a charity in 2007 and we are now located in the London Borough of Hackney.

Our unique model offers intense mentoring and support for young people, placing them in a class of eight students with a dedicated boxer who acts as mentor, teacher support and coach throughout their stay with us. They develop a strong relationship that provides a foundation from which the student can embark upon a positive cycle of achievement.

We use the beneficial effects of sport to empower our students, teach them to manage their anger, give them confidence in their learning and direct them towards further education, training or employment.

We currently offer places for 40 boys and girls at Key Stage 4 currently with a reduced curriculum of 6 GCSEs or equivalent supplemented by a wide range of enrichment activities, and a clear pathway to further education and employment.



## Existing Site

The site comprises an area of unutilised land and a sports hall building situated on the south-western corner of the junction between Brooke Road and the A107 Upper Clapton Road. The site used to form part of a larger site occupied by BSix Sixth Form College.

It is understood that the sports hall has been out of use for some time and the adjacent land was formerly another college building which has been demolished. The parcel also comprises of a small area of car parking (six spaces), for which the spine road has been removed and as such are currently unusable.



Early CGI Visualisation - Internally-facing outdoor space

## Proposed Development

Proposed development is to provide a new school building with associated facilities for occupancy by The Boxing Academy on a permanent basis. The development proposal is predicated on full demolition and rebuild on the site. The project is being procured by the Department for Education on behalf of The Boxing Academy, who will move out of their temporary accommodation at Monteagle Way. The permanent facility for the school will have capacity for 56 pupils and be supported by a total number of between 30-40 staff, of which 30 staff members are typically expected to be on site at any one time. As part of the development a multi-use games area (MUGA) is proposed to the west of the building adjoined by a disabled and

minibus parking bay, and servicing/turning zone. Access to the site would continue to remain from the north along Brooke Road.

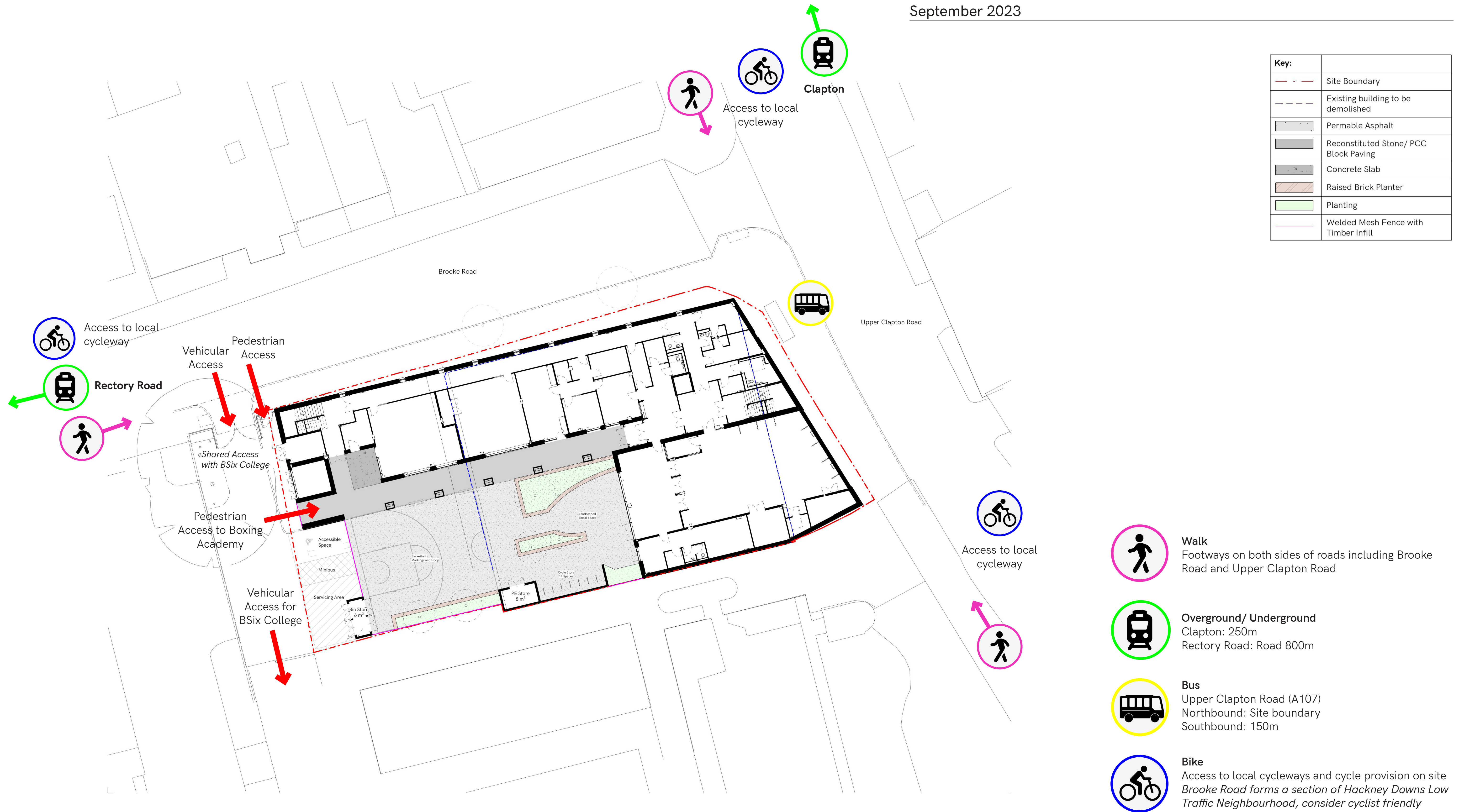
The focus of the educational curriculum is Maths, English, Science, Art, Sports, and vocational studies, as well as a support suite that offers pupils a 1:1 focus with staff. This is uniquely centred around the Boxing culture as a mechanism for offer an ethos that delivers 'clear boundaries, a system of rewards and sanctions and an emphasis on discipline, achievement and hard work'.



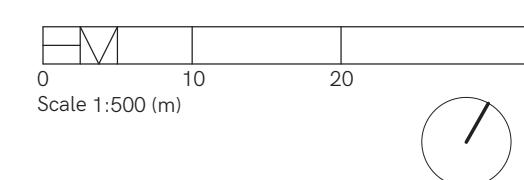




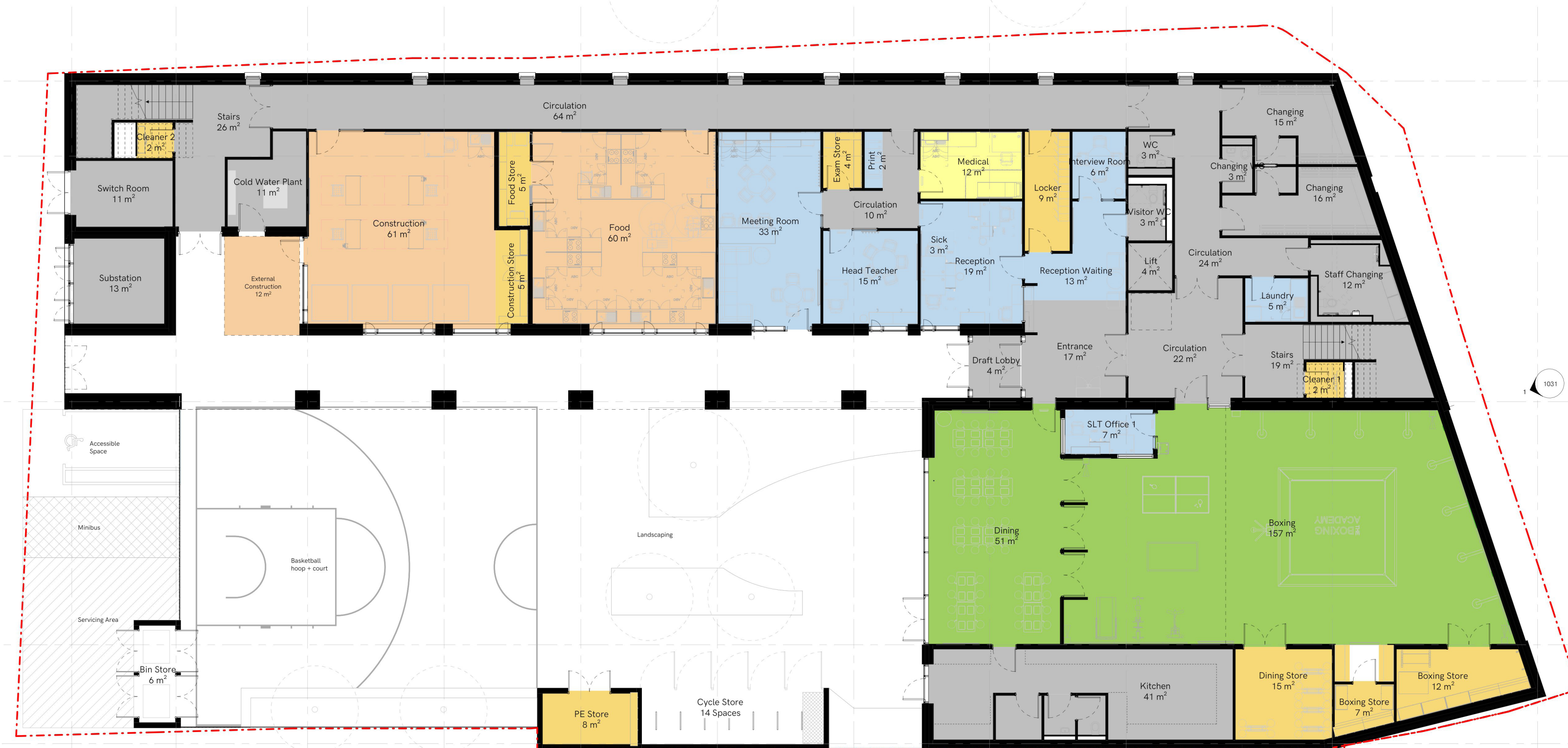




Proposed Site Plan 1:500



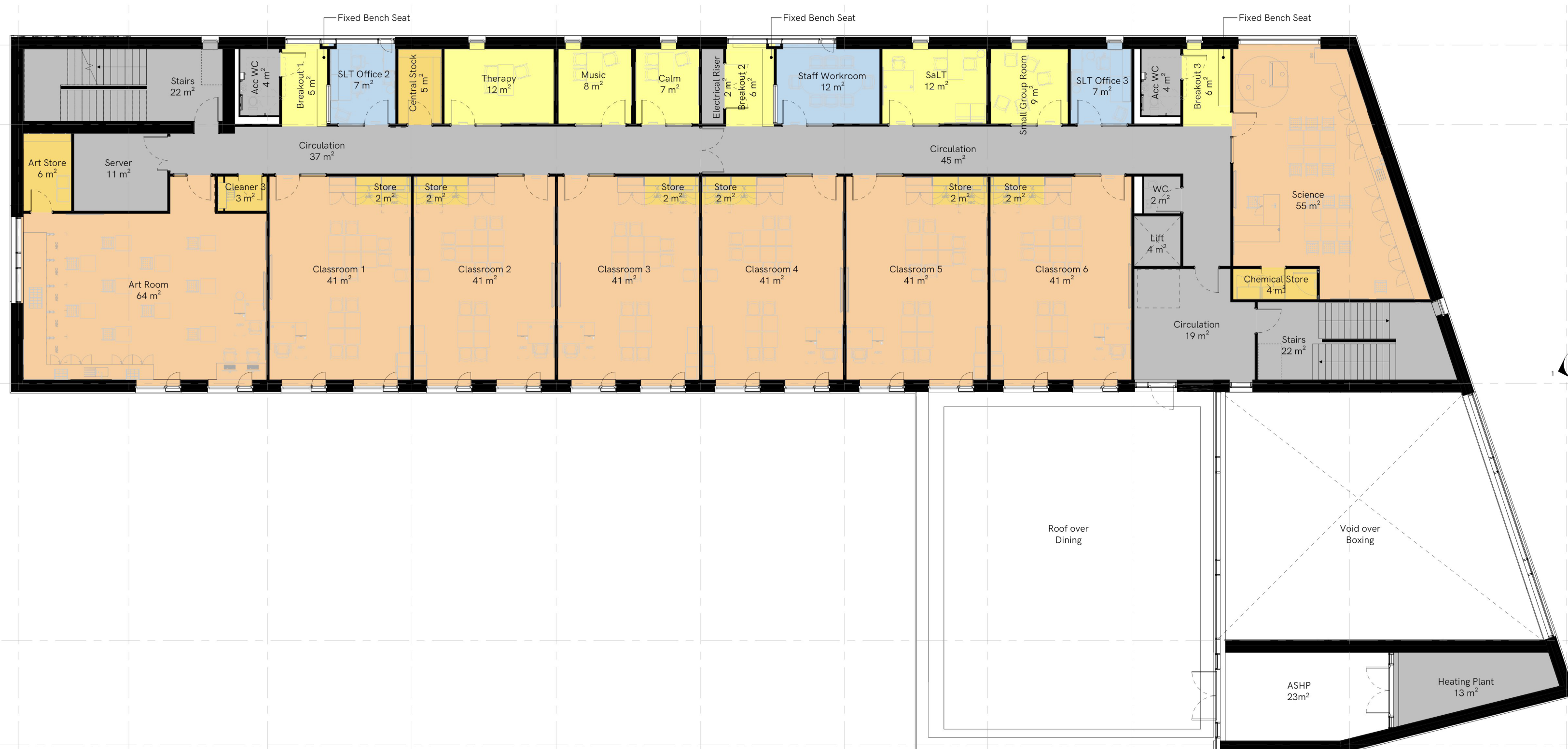




Early visualisation - View from Dining into external space



Early visualisation - View towards Reception entrance



Early visualisation - View of entrance from Brooke Road and external space







North Elevation



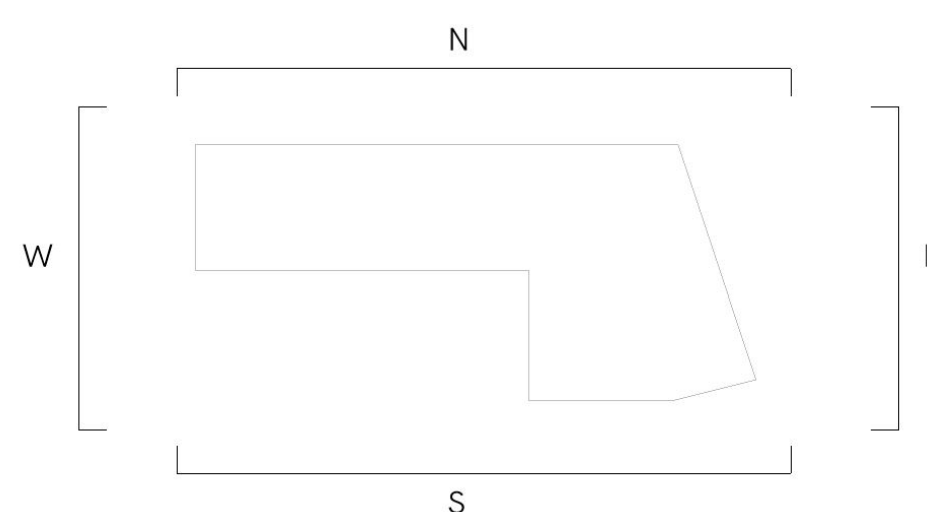
South Elevation



East Elevation



West Elevation



Early CGI Visualisation - View from Brooke Road to the entrance at the North-West of the proposal



Early CGI Visualisation - Internal outdoor space







Early CGI Visualisation - Boxing Gym



Early CGI Visualisation - View from Upper Clapton Road to the North-East of the proposal

